

MORE SIMULATION



MORE SIMULATION DATA



NEED FOR SPDM SOLUTION

ELEVATE YOUR BUSINESS'S BOTTOM LINE AND ENABLE MUCH FASTER DIGITAL TRANSFORMATION

Effective simulation process and data management

ACCELERATES INNOVATION

Effective simulation process and data management frees up valuable engineering time for innovation

DEMOCRATIZES SIMULATION

Enterprise-wide collaboration requires contextual data access to everyone (not just the experts)

ENABLES DIGITALIZATION

Successful digitization efforts should connect simulation and optimization to the larger product lifecycle



The challenge: Engineers spend 30% of their time searching for the right data



The solution - Ansys Minerva, built by simulation engineers for simulation engineers

- The only solution that is purpose-built for simulation data
- Authoritative source of truth and not a single source
- Open and federated and works with your existing ecosystem

Positive business outcomes driven by Ansys Minerva

ENGINEERING TIME SAVING



PER-YEAR TIME SAVINGS BY STREAMLINING DESIGNER CAE WORKFLOWS ACROSS DISCIPLINES

DESIGN CYCLE TIME REDUCTION



FASTER THROUGHPUT ON SIMULATION ENGINEERING WORKFLOWS AND DECISION-MAKING BY DESIGNERS

COST REDUCTION



PRODUCTIVITY GAINS

Common pain points

Design optimization requires complex, iterative processes

Simulation data segregated by discipline and physics

Physical prototyping is time consuming and costly

Multiple simulation tool vendors
No or manual data transfer between tools

Lack of visibility to design model changes

Difficult to evaluate impact of requirements change
Does CAD Model change impact the simulations?

Lack of status reporting

Lack of standard instructions for preparing simulation data

Ansys Minerva outcomes

Effectively manage design-simulation iterative process
Enable and automate best practices

Improved collaboration between mechanical design, electronics design and simulation

Support digital driven product development
Improve engineering work efficiency

Ensure interoperability between tools

Synchronized data sharing, keep up with design changes
Ensure engineers are working on correct version of data

Traceability: Requirements - Design - Simulation - Results
Full traceability: Requirements to designs and simulations

Provide visibility into overall project schedules and progress
Easy to use and configure reporting and dashboards

Enable and automate best practices

See how our customers are leveraging Ansys Minerva for their digital transformation effort



"Ansys Minerva is important to Eaton and plays a key part in our larger, enterprise-wide digital prototyping and additive manufacturing (AM) initiatives... Ansys Minerva will help make our user experience more streamlined than it is today."

Todd Earls / Vice President of Information Technology at Eaton.



Cummins uses Ansys' digital transformation technologies in research and development of advanced diesel engines

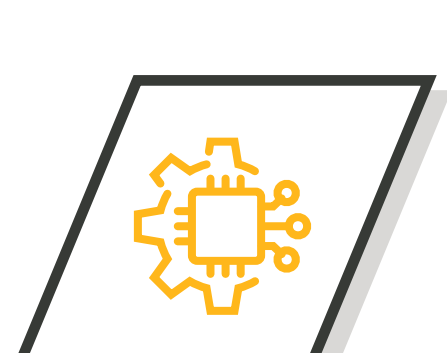
"This new agreement with Ansys allows us to further our vision for analysis led design processes and to continue to provide our customers with dependable products. And it also gives Cummins flexibility for the future, helping us to grow in areas we couldn't consider in the past."

Wayne Eckerle / Vice President of Corporate Research and Technology at Cummins.

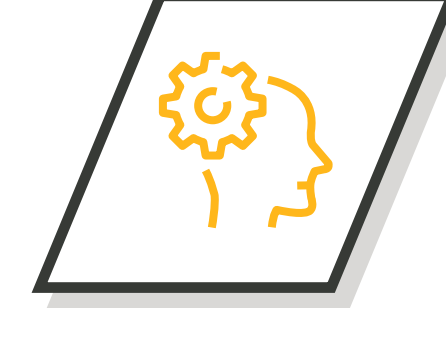
Ansys uniquely delivers customer success



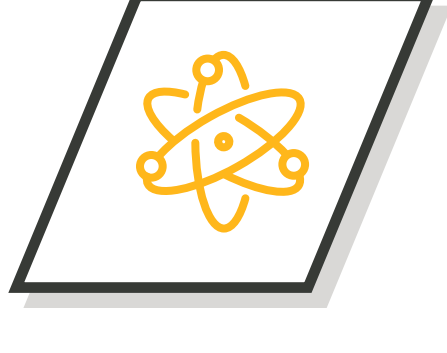
We understand the needs of simulation engineers



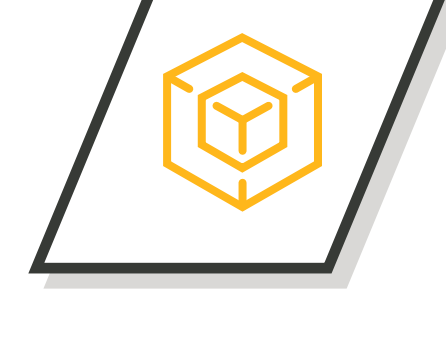
Pioneer of pervasive simulation



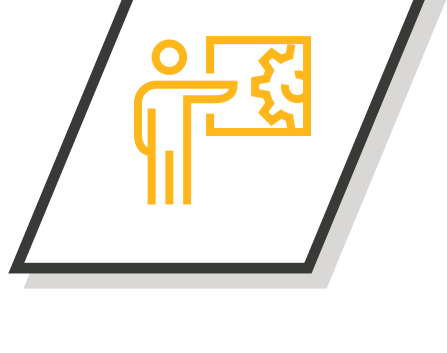
Out of the box integration with Ansys flagship tools



Ecosystem of expert partners for integration into PDM



Open platform concept, designed to be adapted to customer use cases



Uncompromising solution for simulation from simulation experts



Global presence of Ansys and network of partners

ANSYS, Inc.
Southpointe
2600 Ansys Drive
Canonsburg, PA 15317
U.S.A.
724.746.3304
ansysinfo@ansys.com

If you've ever seen a rocket launch, flown on an airplane, driven a car, used a computer, touched a mobile device, crossed a bridge or put on wearable technology, chances are you've used a product where Ansys software played a critical role in its creation. Ansys is the global leader in engineering simulation. We help the world's most innovative companies deliver radically better products to their customers. By offering the best and broadest portfolio of engineering simulation software, we help them solve the most complex design challenges and engineer products limited only by imagination.

Visit www.ansys.com for more information.

Any and all ANSYS, Inc. brand, product, service and feature names, logos and slogans are registered trademarks or trademarks of ANSYS, Inc. or its subsidiaries in the United States or other countries. All other brand, product, service and feature names or trademarks are the property of their respective owners.

© 2021 ANSYS, Inc. All Rights Reserved.